



HAL
open science

Learning-based prediction of the particles catchment area of deep ocean sediment traps

Théo Picard, Jonathan Gula, Ronan Fablet, Jeremy Collin, Laurent Mémery

► **To cite this version:**

Théo Picard, Jonathan Gula, Ronan Fablet, Jeremy Collin, Laurent Mémery. Learning-based prediction of the particles catchment area of deep ocean sediment traps. *Ocean Science*, 2024, pp.1-22. 10.5194/egusphere-2023-2777 . hal-04672626

HAL Id: hal-04672626

<https://imt-atlantique.hal.science/hal-04672626v1>

Submitted on 13 Sep 2024

HAL is a multi-disciplinary open access archive for the deposit and dissemination of scientific research documents, whether they are published or not. The documents may come from teaching and research institutions in France or abroad, or from public or private research centers.

L'archive ouverte pluridisciplinaire **HAL**, est destinée au dépôt et à la diffusion de documents scientifiques de niveau recherche, publiés ou non, émanant des établissements d'enseignement et de recherche français ou étrangers, des laboratoires publics ou privés.



Distributed under a Creative Commons Attribution 4.0 International License



Learning-based prediction of the particles catchment area of deep ocean sediment traps

Théo Picard ¹, Jonathan Gula ^{2,3}, Ronan Fablet ⁴, Jeremy Collin ¹, and Laurent Mémerly ¹

¹Univ Brest, CNRS, IRD, Ifremer, Laboratoire des Sciences de l'Environnement Marin (LEMAR), IUEM, Plouzané, France

²Univ Brest, CNRS, IRD, Ifremer, Laboratoire d'Océanographie Physique et Spatiale (LOPS), IUEM, Plouzané, France

³Institut Universitaire de France (IUF), Paris, France

⁴IMT Atlantique, Lab-STICC, Plouzané, France

Correspondence: Théo Picard (theo.picard@univ-brest.fr)

Abstract. The ocean biological carbon pump plays a major role in climate and biogeochemical cycles. Photosynthesis at the surface produces particles that are exported to the deep ocean by gravity. Sediment traps, which measure the deep carbon fluxes, help to quantify the carbon stored by this process. However, it is challenging to precisely identify the surface origin of particles trapped thousands of meters deep because of the influence of ocean circulation on the carbon sinking path. In this study, we conducted a series of numerical Lagrangian experiments in the Porcupine Abyssal Plain region of the North Atlantic and developed a machine learning approach to predict the surface origin of particles trapped in a deep sediment trap. Our numerical experiments support its predictive performance, and surface conditions appear to be sufficient to accurately predict the source area, suggesting a potential application with satellite data. We also identify potential factors that affect the prediction efficiency and we show that the best predictions are associated with low kinetic energy and the presence of mesoscale eddies above the trap. This new tool could provide a better link between satellite-derived sea surface observations and deep sediment trap measurements, ultimately improving our understanding of the biological carbon pump mechanism.

1 Introduction

The Biological carbon pump (BCP) plays a major role in climate and biogeochemical cycles. The BCP reduces unperturbed atmospheric CO₂ by 35% to 50% (Williams and Follows, 2011) by exporting organic matter to the deep ocean, thereby supporting abyssal food webs (Billett et al., 1983; Rembauville et al., 2018). The BCP is driven by photosynthesis that occurs within the euphotic layer, typically between 0 and 200 meters, producing gravitationally sinking particulate organic carbon (POC). Sinking particles have a wide range of vertical velocities, from neutral buoyancy to more than 600 meters per day (Villa-Alfageme et al., 2016), and are usually considered to be the main contributors to the BCP (Armstrong et al., 2001; Alonso-González et al., 2010; Siegel et al., 2014; Le Moigne, 2019). While most of POC is remineralized in the euphotic and the mesopelagic zones (200 - 1000 meters), a small but significant fraction of POC reaches the deep ocean below 1000 m to be sequestered for hundreds or thousands of years (Lampitt et al., 2008; Burd et al., 2016). Despite its critical importance, the annual estimate of global carbon export remains poorly constrained, ranging from 5 to over 12 Pg C per year (Turner,



2015). Therefore, quantifying the biological carbon pump is key to understanding the global carbon cycle and how the BCP will respond to climate change (Passow and Carlson, 2012; Henson et al., 2022).

25 Export production has historically been observed with sediment traps (STs) from the upper thermocline down to several thousand meters (Le Moigne et al., 2013). However, linking local primary production to observed exported carbon fluxes is a challenging task. To effectively interpret ST time series, the catchment area, defined as the surface domain containing all likely positions from which particles entering the trap could originate (Deuser et al., 1988), must be clearly identified. Traditionally, the catchment area is considered to be the zone directly above the traps (Deuser and Ross, 1980; Alldredge and Gotschalk, 1988; Asper et al., 1992; Armstrong et al., 2001; Lampitt et al., 2023). While this approach demonstrates a first-order coupling, it is based on a strong hypothesis: the POC export by gravitational sinking is considered from a quasi one-dimensional (1D) perspective. However, the ocean circulation significantly affects the particle sinking paths. Thus, the origin of the particles that reach a deep ST can be distributed over a large domain that depends mainly on the ocean dynamics at all scales (Siegel et al., 1990; Deuser et al., 1990; Burd et al., 2010; Liu et al., 2018; Dever et al., 2021)

35 Recent studies have focused on the influence of ocean circulation and evaluated funnel statistics for specific sediment trap locations using particle backtracking and numerical simulations (Siegel et al., 2008; Liu et al., 2018; Wekerle et al., 2018; Wang et al., 2022). These studies have shown that the catchment area is highly dependent on several factors such as sinking velocities, trap depth, regional and seasonal advective processes. The application of Lagrangian backtracking approaches with assimilated ocean currents has been proposed to relate the ocean circulation to real ST observations (Frigstad et al., 2015; Ma et al., 2021). However, the full 3D reconstruction of the ocean states from available satellite-derived and in situ observations is highly challenging and prone to significant uncertainties in the retrieval of mesoscale and submesoscale dynamics (Cutolo et al., 2022). This leads to uncertainties in the prediction of catchment areas and in the assessment of the BCP.

Machine learning tools are increasingly being used to tackle these complex problems, and generally offer an end-to-end formulation that is easier to develop and computationally cheaper. Oceanography studies have already demonstrated the benefits of machine learning, particularly in predicting the properties of the ocean interior from observations of the ocean surface (Chapman and Charantonis, 2017; Bolton and Zanna, 2019; George et al., 2021; Manucharyan et al., 2021; Pauthenet et al., 2022). They can achieve state-of-the-art performance or even outperform standard operational interpolation data assimilation schemes when focused on specific ocean variables (Manucharyan et al., 2021; Beauchamp et al., 2022; Cutolo et al., 2022). They can also significantly reduce the computational complexity of numerical simulations, including for Lagrangian particle trajectories (Jenkins et al., 2022). It is therefore clear that machine learning offers a wide range of new possibilities for improving our understanding of the ocean.

55 In this study, we use deep learning schemes to study the catchment areas of deep ocean particles. Our main contributions are as follows: (i) we formulate the prediction of the catchment area of particles trapped in STs as the supervised learning of a regression model from ocean circulation variables; (ii) we investigate whether ocean surface conditions constrain sinking particles path; (iii) we analyse the main factors affecting the prediction performance. We report numerical experiments for a case study area in the North Atlantic using realistic high-resolution simulation data.



The paper is organized as follows. Section 2 introduces the methodology use to design the databases for training and performance evaluation. Section 3 presents the neural network structure. In section 4, we evaluate the accuracy of the predictions, compare different configurations and analyse the relationship between input conditions and prediction performance. In Section 5, we discuss potential improvements and future work. Our conclusions are presented in Section 6.

2 Data and case-study area

As a case study, we focus on the origin of particles captured by moored ST at the UK Porcupine Abyssal Plain (PAP) station (49°N, 16.5 °W), which provides fluxes with a temporal coverage of more than 30 years (Hartman et al., 2021). We use a simulation-based experimental setup consisting of realistic CROCO simulations and particle backtracking experiments. More precisely, we simulate particles falling into a fictive PAP ST located at 1000 m depth, focusing on particles with a vertical sinking velocity of 50 m/day.

2.1 Numerical simulation around PAP station

We use the realistic North Atlantic Subpolar Gyre simulation designed and validated by Le Corre et al. (2020). This simulation is run using CROCO (Coastal and Regional Ocean COmmunity model) based on ROMS (Shchepetkin and McWilliams, 2005), which solves the hydrostatic primitive equations for the momentum and state variables. The domain has 2000×1600 grid points and a horizontal grid resolution of 2 km, resolving the mesoscale and part of the submesoscale. The model has 80 vertical sigma levels, with a vertical spacing of ~ 5 m at the surface and up to 100 m in the intermediate layer. After a two-year spin-up period, two simulations called POLGYR1 and POLGYR2 are run. POLGYR1 runs between Jan, 1th 2002 and Dec, 4th 2009 (eight years) and is used to create a training and an evaluation database, while POLGYR2 runs between Jul, 24th 2003 and Jan 12nd 2009 (about 6 years and half) and is used for the test database. The two simulation setups are identical in all aspects except for the initial and boundary conditions, which are perturbed in POLGYR2. After spin-up, the chaotic evolution results in uncorrelated dynamics between the two simulations (not shown here). We save snapshots every 12 hours for both simulations. We focus on a 1040×1040 km subdomain centered on PAP station (Figure 1). This region is characterized by moderate kinetic energy compared to the western and northern parts of the subpolar gyre, with a mean flow of about 0.05 m/s (Le Cann, 2005).

2.2 Lagrangian backtracking of catchment areas

A series of Lagrangian experiments are performed offline with Pyticles (Gula and Collin, 2021), using 3d velocities from the POLGYR1/2 simulations. Pyticles is a parallel Fortran/Python Lagrangian tool for offline 3D advection with the ability to include particle behaviour. Transport is performed along the native Arakawa C-grid and terrain-following vertical coordinates of the ocean model. The 3D velocity fields are linearly interpolated at particles positions, which are advected using a Runge-Kutta 4 numerical scheme. In addition to passive advection, a negative vertical velocity is applied to simulate the sinking of dense particles. The numerical schemes have been shown to be robust to trajectory reversibility (Wang et al., 2022) using 12-hourly input fields and a time step of 120 seconds.

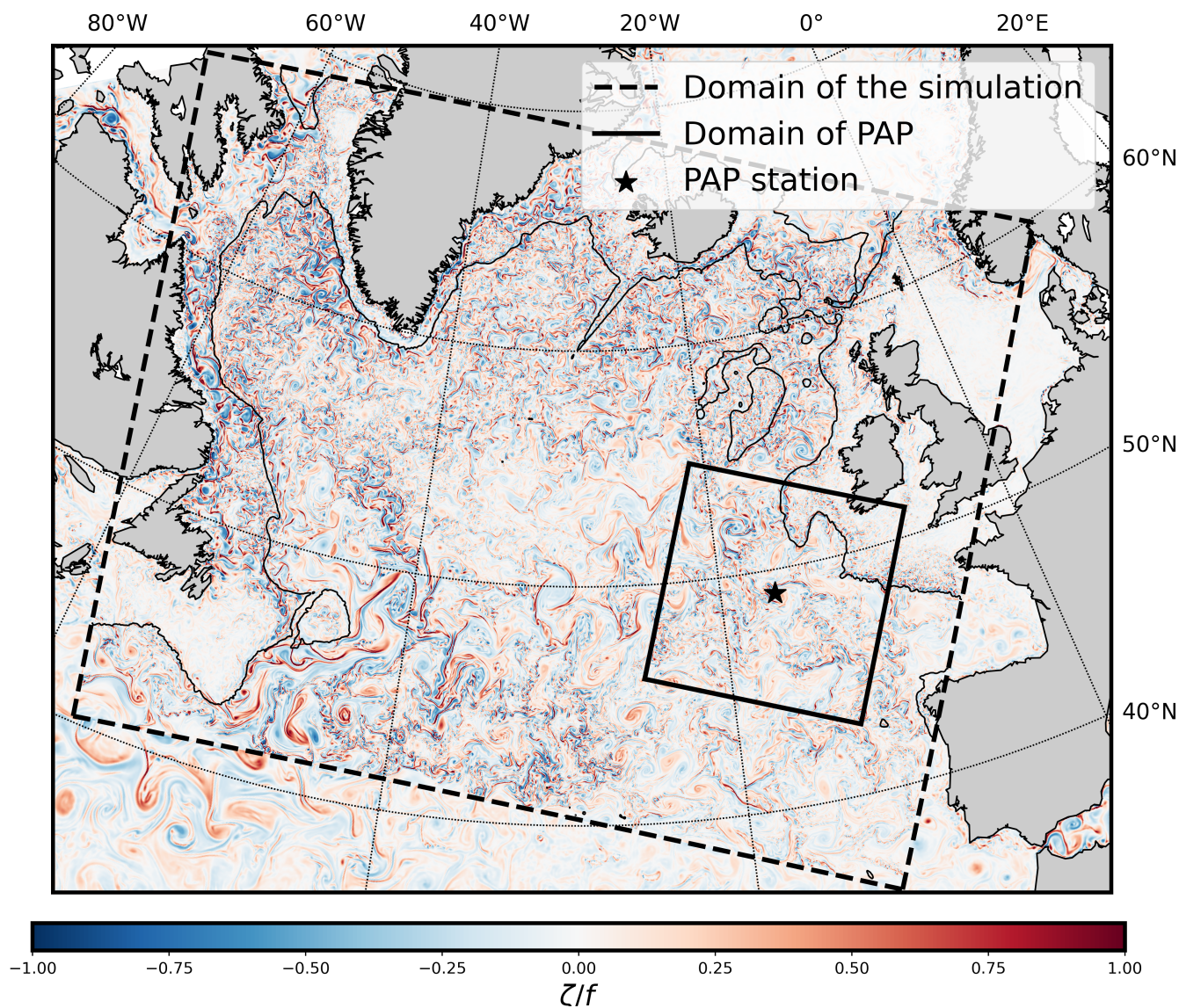


Figure 1. Snapshot of the North Atlantic Subpolar Gyre simulation on 8 February 2008 with relative vorticity. The dashed square is the domain of the simulation. The solid square is the sub-domain we are focusing on. The location of the PAP station is indicated by the black star. The black contour is the bathymetry at 1000 m depth.



For each experiment, we apply the following procedure. At 1000 m depth, we release in backtracking 36 particles every 12 hours over a period of 10 days (particle collection period), for a total of 720 particles. The particles are released uniformly over a patch of 10 km x 10 km and ascend until they reach the base of the euphotic layer at 200 m. Particles have a constant sinking velocity of 50 m/day and their journey takes on average 15 days, but this can vary from 10 to 20 days (Wang et al., 2022). We save the particles' positions every 100 m step and compute the resulting Probability Density Function (PDF). Figure 2a illustrates a typical experiment, in which most of the particles are attracted to an anticyclone structure visible between 200 m and 1000 m. Biological particles are mostly created between the surface and 200 m, but we considered as a first approach that the PDF at 200 m represents the depth from which they are exported. The PDFs saved at vertical levels lower than 200 m provide information on the 3D+t path of the particles to better constrain the training phase of the network. To improve training efficiency, we also apply a Gaussian filter to each PDF (Figure 2b, c). We performed sensitivity tests to ensure that increasing the number of particles and the size of the patch does not significantly affect the PDF. To avoid common particle between two experiments, we space them 10 days apart. Instead of representing one ST at PAP, we model 36 STs around the region to increase the number of experiments (Figure 3a). The STs are close enough to the PAP site to have the same hydrodynamical properties. We choose to space the centres of the patches 36 km apart, so that particles from two different patches are separated by at least 26 km, which is slightly above the Rossby radius value in the region (Chelton et al., 1998). This distance is sufficient to observe significant differences in the catchment areas for two consecutive patches (Figure 3b).

For each Lagrangian experiment, we create an output tensor $Y_i = (n_{output} \times \delta x \times \delta y)$, where δx and δy represent the number of points on the horizontal axis and n_{output} the number of vertical levels where the PDFs are computed. In our case, we consider $n_{output} = 8$, corresponding to one layer every 100 m depth from 900 m to 200 m. The horizontal domain was chosen based on the statistical results presented in Wang et al. (2022). The backtracked particles are distributed within a 800 km x 800 km domain centered on PAP. Considering a horizontal resolution of 8 km (raw inputs are downscaled for storage constrain), this results in $\delta y = \delta x = 100$ points.

For each output Y_i , we store a corresponding input tensor $X_i = (n_{input} \times \delta x \times \delta y)$ which contains the hydrodynamic conditions of the experiment i . These data include temperature, vorticity, horizontal velocities (u and v), and sea surface height (SSH). All the variables are extracted on the same horizontal domain as Y_i and downscaled to a resolution of 8 km. To capture the temporal variability, we consider a 10-day time sampling over a 30-day time window (4 time steps). To evaluate the importance of the surface in comparison to the sub-surface data (Section 4), we distinguish two datasets, D_{layers} and D_{surf} :

- D_{levels} : this dataset contains the variables at 4 vertical levels, i.e. surface, 200 m, 500 m, 1000 m. Each input tensor is a $68 \times 100 \times 100$ -dimensional tensor, where $n_{input} = 68$ represents the number of input fields extracted for each experiment.
- D_{surf} : This dataset contains only sea surface conditions. This results in $20 \times 100 \times 100$ -dimensional input tensors.

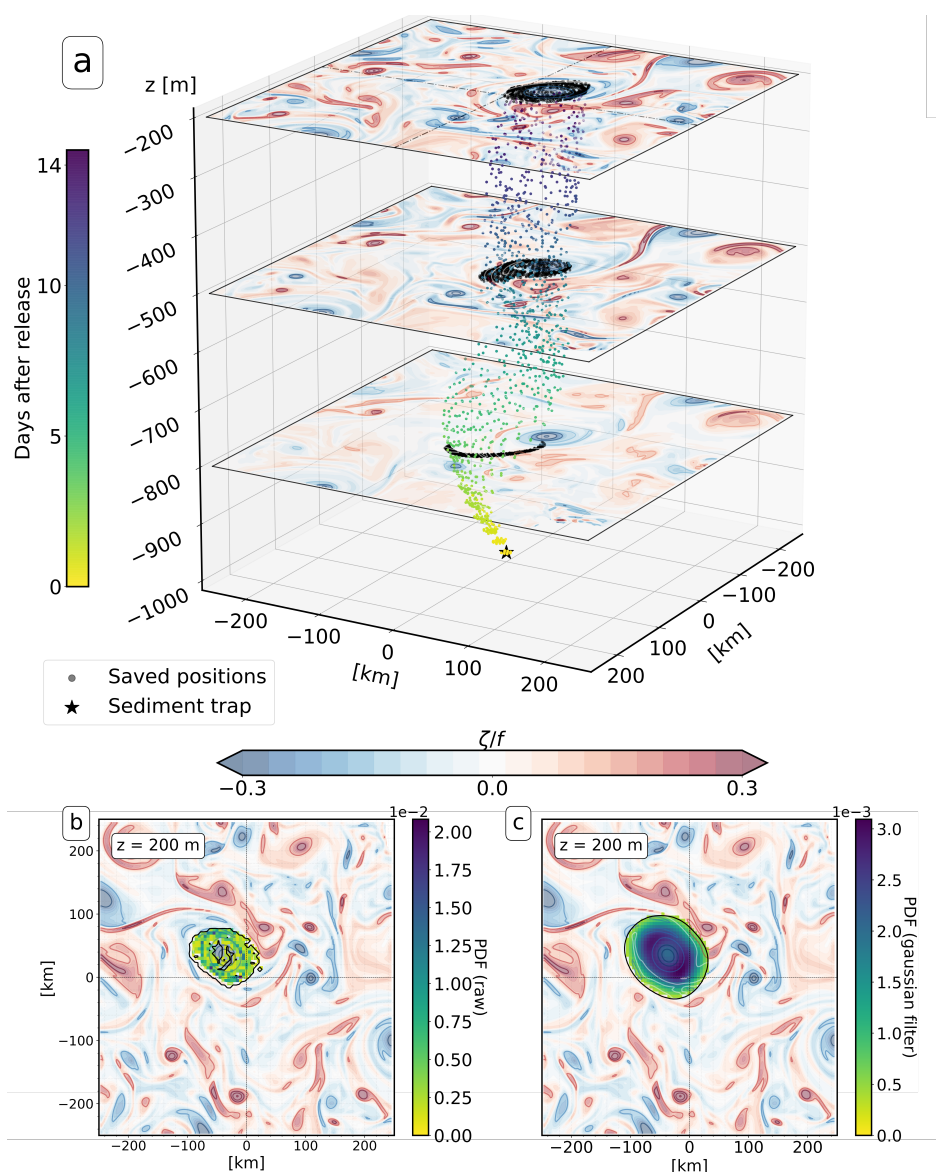


Figure 2. a) 3D view of the Lagrangian experiment. The color of the particles represents the number of days after their release at the ST (5% of particles are plotted). Snapshots of relative vorticity are displayed at 3 vertical layers (-800 m, -500 m, -200 m). Black points on the visualization indicate all the saved positions of particles at these specific vertical levels. b) The computed raw PDF of particles at 200 m c) PDF at 200 m after the Gaussian filter.

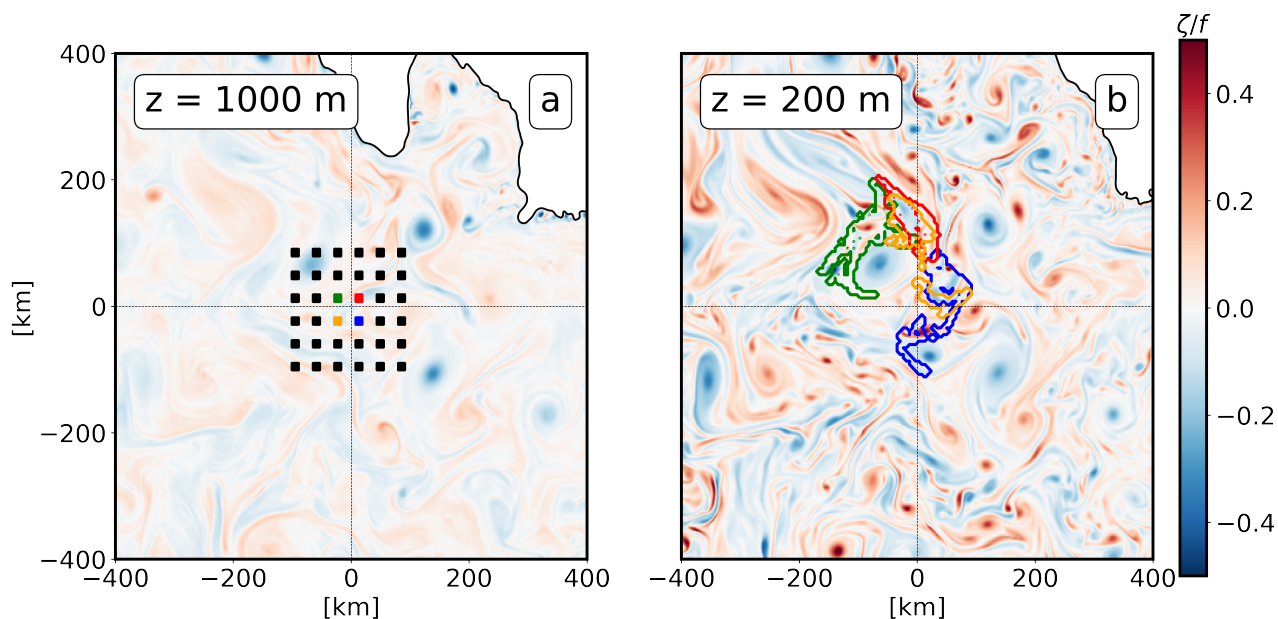


Figure 3. Snapshots of the relative vorticity on Oct 22 2003 (POLGYR1), 20 days after the particle release. a) vorticity field at a 1000 m depth with the 36 initial positions of the particles (black and colored squares). b) vorticity field at a 200 m depth with superimposed the origins of the backtracked particles for the 4 colored patches of the left panel.

3 Proposed deep learning scheme

120 This section introduces the proposed deep learning scheme, in particular the proposed neural architecture and the training scheme.

3.1 Training, validation and test data

Following the training and evaluation frameworks used in deep learning studies (Lecun et al., 2015), we consider independent training, validation and test datasets as follows. With the Lagrangian experiments presented above, we create a training and a validation dataset using the first simulation setup POLGYR1 (2002 to 2008) and obtain a total of 10260 samples. We divide 125 the samples into a training database (8604 samples from January 2002 to September 2008) and an evaluation database (1224 samples from year 2009). Note that data from September 2008 to January 2009 are not used. The two datasets are separated by a 100-day period to ensure statistical independence. For the test dataset, 6800 samples are created with POLGYR2. They are independent of the training and evaluation experiments.



130 3.2 Architecture

As shown in Figure 4, we use a U-net architecture type (Ronneberger et al., 2015). The U-Net is a state-of-the-art neural architecture for a wide range of image-to-image mapping tasks, including application to ocean studies (Barth et al., 2020; Beauchamp et al., 2022).

The input to the network stacks the hydrodynamic conditions and a $8 \times 100 \times 100$ -dimensional tensor representing the initial PDF of the particles. All the initial PDFs have probability of 0.25 over the 4 points in the center of the map, representing the release patch (not shown). The network consists of a series of convolutional (kernel = 5), ReLu and Batch norm layers. A 3-step pooling process allows the resolution to be progressive downscaled from 8 km to 32 km. Combining these steps with skip connections enables the detection of hydrodynamic structures at different spatial scales. The final layer of the U-Net is a softmax layer to provide normalized PDF predictions. The output of the network is a $8 \times 100 \times 100$ -dimensional tensor composed of the predicted PDFs from 900 m to 200 m (every 100 m). The last PDF at 200 m represents the predicted origin of the particles.

3.3 Training scheme

As training criterion, we consider the Bathacharyya coefficient (Bhattacharyya, 1943) to assess how well the predicted PDFs match the real ones. The Bathacharyya coefficient provides a similarity score between two PDFs, and leads to the Bathacharyya training loss (BL):

$$BL = 1 - BC = 1 - \sum \sqrt{P_i Q_i}$$

where P_i is the predicted probability at point i and Q_i is the true probability at the same point. BL ranges from 1 to 0, with 0 representing a perfect prediction. During the training phase, we aim to minimize the following loss function (L) :

$$\mathcal{L} = \frac{BL_{200m} + BL_{300m} + \dots + BL_{800m} + BL_{900m}}{n_{layer}}$$

L is the mean of the BL computed at each of the 8 vertical layers. The aim is to force the model to consider the evolution of particles along the water column. Empirically, this method improves the performance of the trained model compared to experiments where the training loss is based only on BL_{200m} .

We implement our deep learning scheme using PyTorch (Paszke et al., 2019). For the training phase, the Adam optimization algorithm (Kingma and Ba, 2015) is used with the following hyperparameters: $\beta = (0.5, 0.999)$, no weight decay, and a learning rate of 0.001. The training process is performed using mini-batches of size 32. After 50 training epochs, the best model is selected based on its performance on the evaluation data. We further improve the performance and robustness of the model by using a bootstrapping method with 10 replicates (Breiman, 1996). The final prediction is a set of PDFs computed as the median of the predictions from the 10 models, followed by re-normalization step. We also compute the standard deviation of the 10 predictions as a confidence index (see section 5).

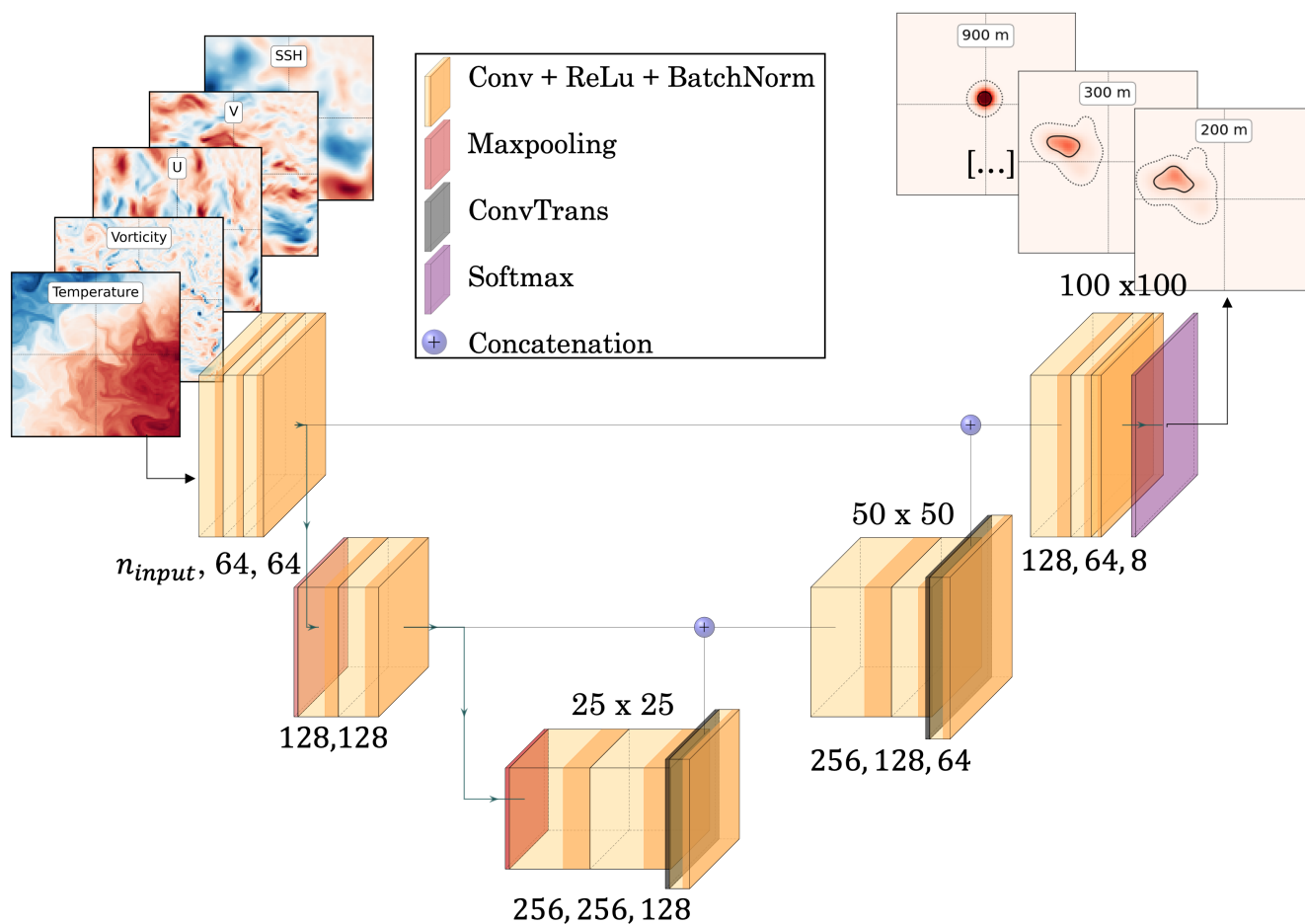


Figure 4. General architecture of the Unet. The inputs are temperature, vorticity, u, v, and ssh images at multiple time steps and depths concatenated with initial PDFs (not shown). The outputs are the PDFs at 8 depths representing the funnel of the particles. At the top of each layer we show the resolution of the images and at the bottom the number of channels.



4 Results

We report the numerical experiments performed on the considered PAP case study. First, we detail a benchmarking experi-
155 ment to evaluate the performance of the proposed deep learning schemes. Second, we further analyse how the hydrodynamic
conditions affect the prediction performance.

4.1 Prediction performance and comparison

We evaluate the performance of several models on the test database using the BL_{200m} metric (i.e. the Bhattacharyya distance
between the predicted PDF and the true PDF for the catchment area at 200m depth). After a visual analysis of the predictions
160 and associated scores, we set up the following evaluation criterion. We consider a prediction to be valid if $BL \leq 0.2$, and not
valid if $BL < 0.3$. For predictions with a value of BL between 0.2 and 0.3, the global area is often still well predicted, but the
values of the PDF are usually rough. In these cases, we decide to create a third class called "quasi-valid". These predictions are
not considered valid, but still provide valuable information in the search for particle origins, and this information needs to be
highlighted in the final score statistics.

165 We benchmark different models in Table 1. The $Unet_{4layers}$ model is the U-net presented in section 3, trained and tested
with the $D_{4layers}$ database, which contains both surface and sub-surface information. The $Unet_{surf}$ model uses only surface
information from the D_{surf} database. $Unet_{surf-nb}$ is similar to $Unet_{surf}$ but without the use of the bootstrap method. The
 $CNN_{surf-basic}$ model includes a simple CNN architecture consisting of a series of convolutional layers with a Relu activation
function, which we tested with D_{surf} . We also include a *Baseline* prediction given by the average of all the true PDFs used
170 in the training database. This mean PDF roughly corresponds to a 2D Gaussian distribution centred on PAP, as also presented
in Wang et al. (2022).

The *Baseline* and $CNN_{surf-basic}$ models have poor performance with 0 valid cases. This highlights the complexity of the
prediction task and the need for non-trivial models. It is noteworthy that the U-net architecture seems to be well suited to this
problem. $Unet_{surf-nb}$ achieved a very good performance of 58 % of valid cases, which was increased to 66% with the use
175 of bootstrapping. Taking into account the quasi-valid predictions, $\sim 85\%$ of the predictions provide valuable information with
only surface data. However, the comparison between $Unet_{4layers}$ and $Unet_{surf}$ demonstrates the importance of subsurface
information to obtain more accurate and robust predictions. With 81 % of valid cases and 13 % of quasi-valid cases, $Unet_{4layers}$
clearly outperforms $Unet_{surf}$. This would mean that in about 10-15% of the cases, subsurface data is required to make valid
predictions. Figure 5 shows examples of predictions from the test database using the $Unet_{4layers}$ and $Unet_{surface}$ models. The
180 PDF is represented by two contours, one containing 99% of the particles (dotted contour) and the other containing 50% of the
particles (solid contour). Both models have a good ability to predict the overall catchment area. However, valid predictions are
mainly characterised by a well predicted center of the PDF, which is usually more accurate for $Unet_{4layers}$. In the following,
we only focus on $Unet_{4layers}$ and $Unet_{surface}$ predictions.

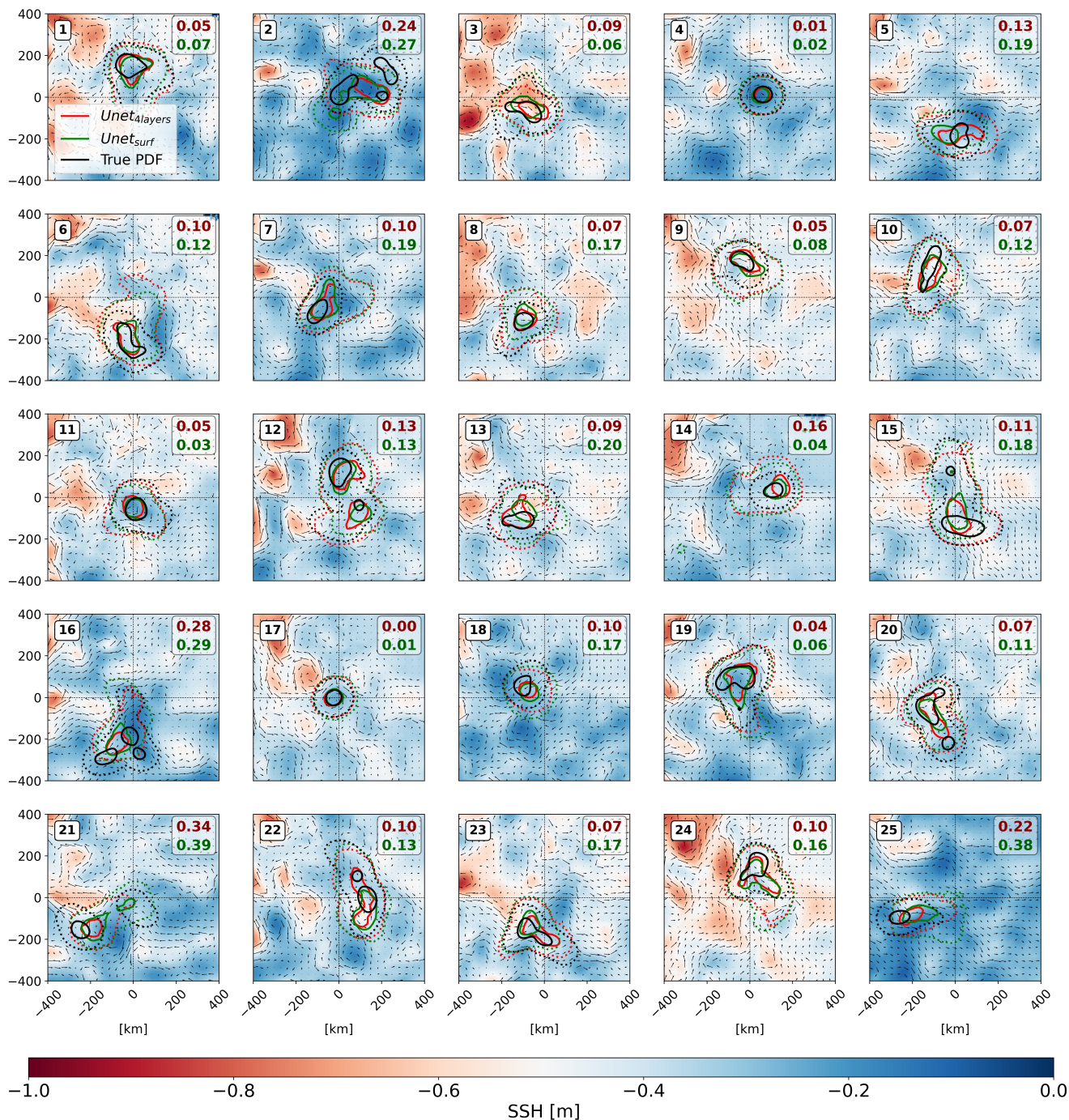


Figure 5. Examples of predictions. PDFs predicted with $Unet_{layers}$ (red) and with $Unet_{surf}$ (green). Black contours represent the true origins of particles. Dotted contours contain 99% of the particles, solid contours contain 50%. BL_{200m} score is given for both predictions on the top right. On the background : snapshot of SSH at day +20 after the first particle release with the surface velocities represented with the arrows. All domain size are 800 x 800 km and centered on the trap where particles are released.



Table 1. Score and performance for different model architectures. For each model we indicate the number of parameters (nb param), the averaged prediction score BL_{200m} , the percentage of valid, quasi-valid and non-valid test cases.

Models	Nb param	BL_{200m}	Valid pre- diction [%]	Quasi-valid prediction [%]	Non-valid prediction [%]
$U_{net_{4layers}}$	1.9M (x10)	0.13	81	13	6
$U_{net_{surf}}$	1.8M (x10)	0.18	66	19	15
$U_{net_{surf-nb}}$	1.8M	0.21	58	23	20
$CNN_{surf-basic}$	205K	0.61	0	1	99
<i>Baseline</i>	0	0.45	0	8	92

4.2 Statistical analyse of the performance

185 We quantitatively analyze potential causes of valid or invalid predictions. The examples show that the shape of the particle
 distributions has a significant impact on score prediction. We find that PDF far from the ST with mass center > 150 km (i.e
 the average distance of the particles from their source) are generally not well predicted (Figure 5 and Table 2, index 16, 21,
 25). Similarly, complex PDF shapes characterised by multiple patches spread across the domain (Figure 5 index n°2, 15, 16
 in) appear difficult to predict. The entropy ($-\sum p_i \log(p_i)$, where p_i is the PDF value at point i) characterises the complexity
 190 of the PDF beyond its variance. The entropy increases with the spread of particles and for multimodal distributions and high
 entropy value (> 6.6) could explain in some cases the prediction bias (Table 1 index n°2, 15, 16). This trend is confirmed by
 the statistical analysis over the whole test dataset shown in Figure 6. With a mass center above 200 km, the chance of having
 a valid prediction with $U_{net_{surf}}$ is less than 30%. Similarly, we observe a trend of progressive degradation of the score for
 PDFs with an entropy higher than 6.6 (Figure 6b).

195 Several physical factors could be responsible for the final PDF shape. To characterise the local dynamics, we choose to
 compute the Mean Kinetic Energy (MKE) and the Eddy Kinetic Energy (EKE) around the ST such as:

$$\underbrace{\frac{1}{2}(u^2 + v^2)}_{KE} = \underbrace{\frac{1}{2}(\bar{u}^2 + \bar{v}^2)}_{MKE} + \underbrace{\frac{1}{2}(u'^2 + v'^2)}_{EKE} \quad (1)$$

where u and v are the two components of the horizontal ocean velocity, \bar{u} and \bar{v} are the velocities averaged over a 30-day
 window, corresponding to the characteristic time of our Lagrangian experiments. Finally, u' and v' are defined as follows:

$$200 \quad u' = u - \bar{u} \quad (2)$$

$$v' = v - \bar{v} \quad (3)$$

MKE and EKE are spatially averaged within a 400 km box around the ST, and vertically between 200 m and 1000 m. These
 averages are computed every 10 days. MKE can be associated with large-scale currents and mesoscale eddies that stay stable



Index	BL_{200m}^{surf}	BL_{200m}^{4L}	Mass center	Entropy	MKE	EKE	ζ/f_{10-2}	OW/f_{10-3}
10th per	0,06	0,04	36	5,7	69	32	-4,1	-1,4
50th per	0,15	0,11	99	6,3	95	49	-0,4	2,2
90th per	0,35	0,26	193	6,7	126	71	3,6	12,1
1	0,07	0,05	136	6,5	90	81	-4,6	7,4
2	0,27	0,24	136	6,9	94	65	-2,4	2,0
3	0,06	0,09	110	6,4	101	82	4,2	-1,1
4	0,02	0,01	63	5,7	124	31	-4,9	-2,6
5	0,19	0,13	183	6,1	127	46	0,9	4,0
6	0,12	0,10	216	6,4	107	50	-0,4	-0,7
7	0,19	0,10	109	6,0	96	44	-4,4	-2,0
8	0,17	0,07	164	5,9	98	57	0,8	3,3
9	0,08	0,05	172	6,0	82	39	3,0	7,9
10	0,12	0,07	178	6,3	79	47	3,2	1,3
11	0,03	0,05	62	6,2	89	58	-5,1	4,6
12	0,13	0,13	51	6,7	65	47	-2,4	1,1
13	0,20	0,09	148	6,4	74	39	2,2	0,8
14	0,04	0,16	114	5,6	84	36	1,1	1,7
15	0,18	0,11	68	6,8	114	38	1,8	3,0
16	0,29	0,28	242	6,6	91	53	-3,7	0,9
17	0,01	0,00	24	5,5	131	36	-5,0	-2,2
18	0,17	0,10	110	5,9	60	41	1,7	0,3
19	0,06	0,04	95	6,7	137	45	-2,5	2,6
20	0,11	0,07	133	6,7	85	31	2,2	3,8
21	0,39	0,34	257	6,0	89	51	-1,1	2,0
22	0,13	0,10	114	6,5	89	32	-1,0	4,4
23	0,17	0,07	181	6,4	98	35	0,2	0,3
24	0,16	0,10	140	6,3	132	40	-1,8	20,6
25	0,38	0,22	270	5,7	92	27	0,6	0,3

Table 2. Variables associated to the Lagrangian experiments. BL_{200m}^{surf} and BL_{200m}^{4L} indicates the Bhattacharya loss at 200m for surface and 4L model. We computed the PDFs' mass center [m] and entropy. The MKE and EKE [$cm^2.s^{-2}$] are computed with a temporal window of 30 days (period of the Lagrangian experiment) and averaged between 200 m and 1000 m in a 400 km box centred at the ST. ζ/f and OW/f are computed from a surface snapshot taken 20 days after the first particle release and averaged inside a 100 km box centred at the ST. The values of the median, 10th percentile and 90th percentile are given at the top. Index number correspond to the exemples given Figure 5.



during the time window. A large MKE implies strong velocities that are likely to transport the particles far from their source, further complicating the prediction process. EKE typically indicates the presence of moving mesoscale eddies or submesoscale fronts. These smaller scale dynamics can promote divergent flows and increase the entropy, thus affecting the prediction score.

The number of invalid predictions increases on average with both MKE and EKE (Figure 6c, d), although the relationship between the prediction and EKE/MKE is not always simple when looking at all the cases in Table 2. Moreover, the influence of MKE seems to explain the seasonal patterns we observe with the 5-year temporal coverage (Figure 7). For both *U_{net}* models, the best performance was achieved in winter/early spring, while the highest probability of a non-valid prediction was observed in summer. We found a strong correlation ($r^2 = 0.64$) between this trend and the seasonal evolution of MKE. This observation leads us to suggest that MKE could be the main driver of the score on long time scales. The EKE evolution shows a weaker correlation ($r^2 = 0.13$). In particular, the EKE peak visible in April, associated with the deepest mixed-layer and intensified submesoscale activity down to 500 m (Buckingham et al., 2016), is not clearly reflected in the performance score.

However, Table 2 suggests that MKE and EKE are not sufficient to explain the prediction score in all cases. The presence of coherent vorticity structures above the trap appears to facilitate the prediction (Figure 5 index 4, 11, 17). To demonstrate this, we analyze dynamical features using three indicators: the surface relative vorticity $\zeta = v_x - u_y$, the Okubo-Weiss parameter $OW = \sigma^2 - \zeta^2$ with $\sigma = (u_x - v_y) + (v_x + u_y)$ and the sea level anomaly $SLA = SSH - \langle SSH \rangle$ where $\langle SSH \rangle$ is the averaged SSH within the subdomain. All these variables are taken from a surface snapshot on the 20th day after the first release and averaged within a $100 \text{ km} \times 100 \text{ km}$ area centered on the ST (Figure 6e, f, g and Table 2). The best performances ($> 80\%$ of valid predictions) are associated with low negative OW, high absolute ζ and SLA. This situation generally corresponds to the presence of a vortex structure above the trap (Wang et al., 2022). On the other hand, the chaotic situations that can be described by $OW > 0, \zeta \sim 0$, and $SLA \sim 0$ are generally associated with the worst performance.

The presence of large scale currents and eddies appears to be sufficient to explain the prediction scores to a first order approximation: Large KE is typically associated with lower scores, unless we have coherent structures above the trap (corresponding to large KE with negative OW and large vorticity amplitudes). This is highlighted by the bin statistics in Figure 8. The 'non-valid' prediction area in Figure 8a is defined by $KE > 160 \text{ cm}^2 \cdot \text{s}^{-2}$ and $|\zeta/f| < 0.05$, and is characterized by an averaged Bhattacharyya score greater than 0.2 (indicated by the red bins). Similarly, it is possible to observe the same 'non-valid' prediction zone in Figure 8b, defined by $KE > 160 \text{ cm}^2 \cdot \text{s}^{-2}$ and $OW/f > -0.0075$.

230 5 Discussion

In this section, we discuss the possible interpretations of the results, present the limitations of the model, and explore potential improvements that will guide our future work.

5.1 Interpretation of statistics and confidence index

Our results support the relevance of the proposed machine learning approach to predict the catchment area of particles using only surface data. Although subsurface information can improve the quality of the prediction, it is not essential in most cases.

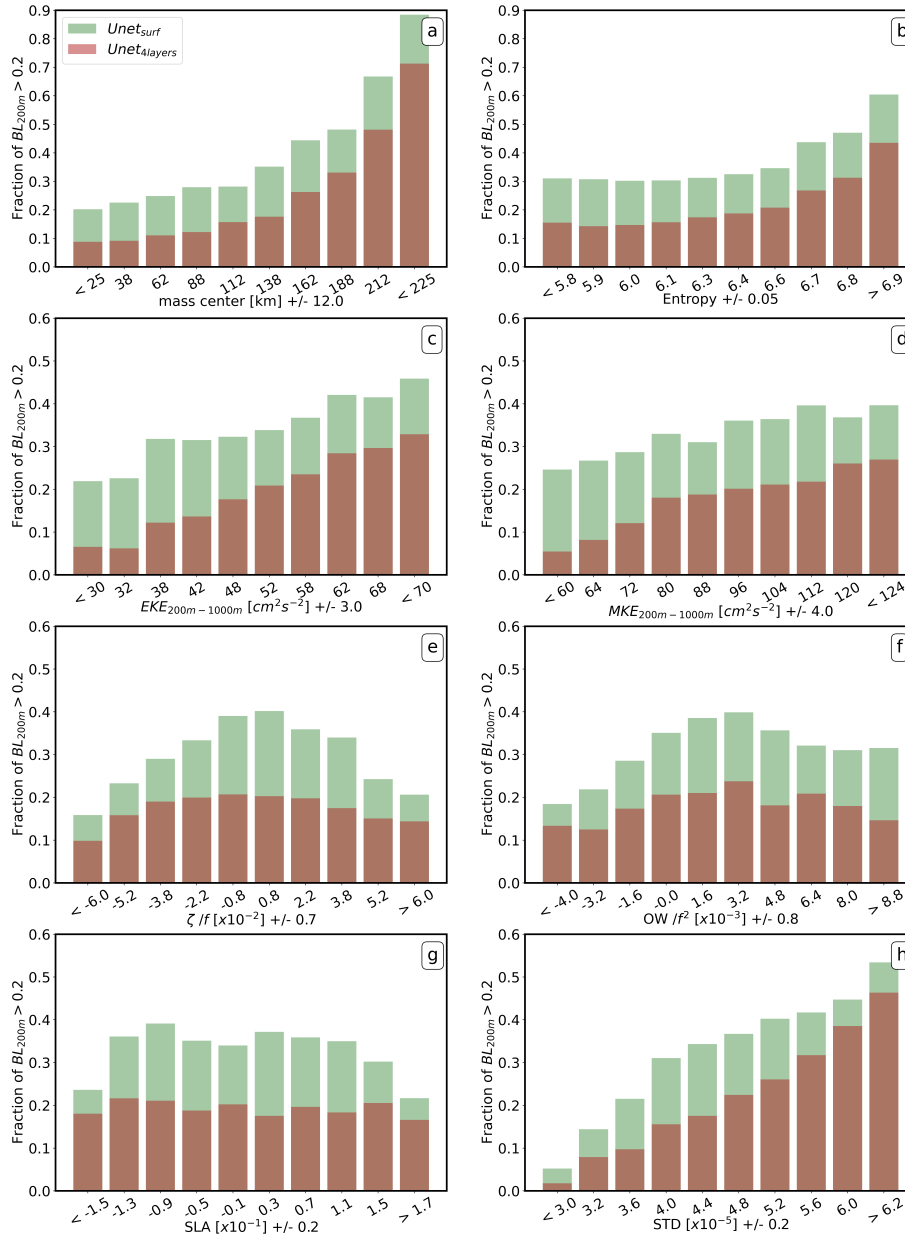


Figure 6. Fraction of non-valid prediction ($BL_{200m} > 0.2$) depending on local dynamical variables a) PDF mass center shift, b) PDF Shannon entropy $-\Sigma p \log(p)$, c) Eddy Kinetic Energy (EKE), d) Mean Kinetic Energy (MKE), e) relative surface vorticity ζ/f , g) Surface relative Okubo-Weiss OW/f^2 , g) Sea Level Anomaly (SLA), and h) standard deviation (STD) of the 10 bootstrap models. For c and d, the energy is averaged in a 400 km box centred on the ST and between 200 and 1000 m. A temporal averaging window of 30 days is used for MKE and EKE. For e, f, g the local dynamical variables come from surface snapshot taken 20 days after the first particle release and averaged in a 100 km box around the ST.

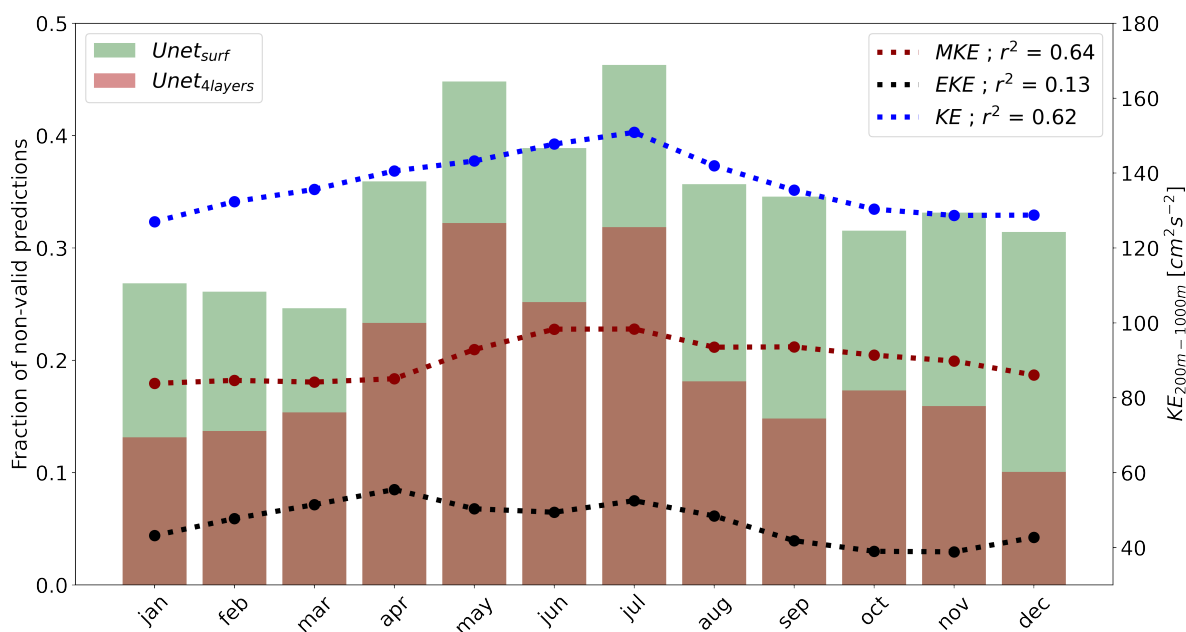


Figure 7. Monthly performance statistics over the testing period for $Unet_{surf}$ and $Unet_{4layers}$. Bar score indicate the probability of non-valid prediction ($BL_{200m} > 0.2$). The monthly averaged evolution of EKE (dotted) and MKE (dashed) between 200 and 1000 m is shown in black.

Analysis of the drivers of the prediction score revealed complex multifactorial causes. Only a few indicators have been chosen for this analysis, and we do not exclude the possibility of other links that have not been investigated. However, the statistics appear coherent to us, as they suggest that the model is more robust under weak and/or stable dynamics. Given that our model is limited in time and space by the input resolution (8 km resolution, only surface or 4 vertical layers and snapshots every 10 days), it is clear that the predictions are sensitive to finer spatial and temporal variability. This may explain the good performance with small KE or in the presence of coherent eddies above the trap. Eddy structures can have a clear surface signature that is easy to identify and that stay coherent at depth (Figure 2). Considering a 30-day period, they are generally stable showing little temporal variability, limiting the particles' spatial dispersion trapped inside. In contrast, chaotic situations, typically characterized by randomly distributed submesoscale fronts with a horizontal size of about 10 km, are more likely to be less well predicted. Additionally, such structures can be too small to be detected. Temporal evolution can be very fast (on the order of days) and is unlikely to be adequately captured by our machine learning models. Such assumptions can directly help in the future to develop a confidence index that depends on the local dynamics. For future real applications, it will probably be difficult to predict the catchment area in every situation. The aim is therefore to understand in which situation the predictions made by the machine learning model can be trusted. In this respect, the standard deviation (STD) of the 10 model predictions

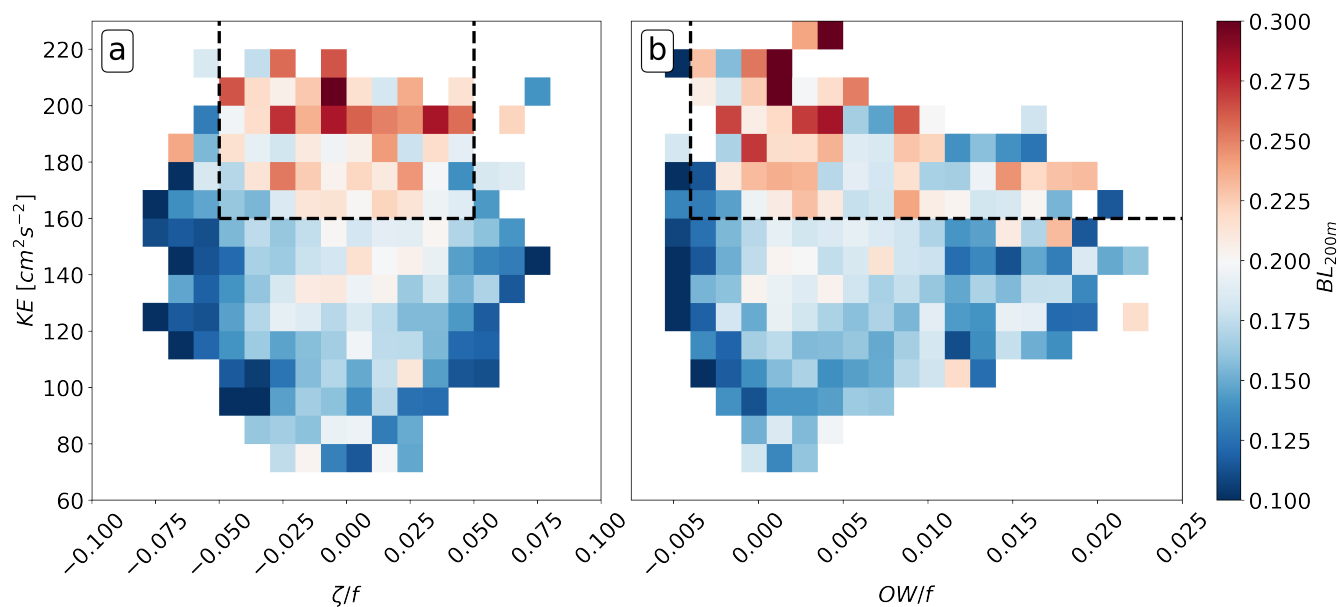


Figure 8. Averaged bin statistics of the prediction score in the a) Kinetic Energy - relative vorticity space b) Kinetic Energy - relative Okubo-Weiss space. Color represents the mean Bhattacharyya score. Bins with less than 5 samples inside are masked. The dashed black lines delimitate the "non-valid" prediction zone represented by the red bins.

250 from the bootstrap method (Figure 6f) can also provide insight into quantifying the uncertainties of the predictions. The STD, computed as the mean STD of the 10 models at each prediction point, shows a linear relationship with the probability of having a valid prediction for the Unet models. Previous studies have also explored such bootstrapping methods for uncertainty quantification (Pauthenet et al., 2022; Beauchamp et al., 2022; Haynes et al., 2023). Future work could also explore more advanced deep learning schemes with built-in uncertainty quantification properties (Haynes et al., 2023).

255 5.2 Towards real data and a more realistic representation of particles

The results strongly suggest a possible use of satellite data to more precisely identify the source area of the particles measured in the deep ocean. As emphasized by Fevre et al. (in prep) for the learning-based mapping of sea surface dynamics, the representativeness of the numerical simulations w.r.t. the real 3D +T hydrodynamic conditions is likely to be a critical feature for the application of a neural model trained from simulation data to a real-world configuration. The use of ocean reanalyses (Frigstad et al., 2015) could also be a relevant solution. In both cases, an in-depth analysis of the 3D ocean circulation seems particularly important to assess the potential limitations of the proposed scheme.

Regarding biology, we consider a ST at 1000 m, whereas in reality the ST at PAP are moored deeper (~ 3000 m). It has been shown that below 1000 m, currents are weaker and do not significantly affect the horizontal displacement of particles (Wang et al., 2022). Therefore, although the influence of ST depth on the prediction score needs to be investigated, it can be



265 assumed that it will not significantly affect the model performance. However, a major bias in the model probably comes from
the carbon particle representation. We represent sinking particles with a settling velocity of 50 m/day, whereas particles have a
wide range of velocities that can vary significantly seasonally (Villa-Alfageme et al., 2016). The origin of particles can be very
different depending on their sinking velocity, so it is important to consider the whole particle velocity spectrum to represent the
catchment areas for particles with different velocities (Wekerle et al., 2018). Therefore, the next step of this study is to focus on
270 the effect of sinking velocities on the prediction score. We can assume that the prediction of catchment areas for particles with
higher speeds than 50 m/day is likely to be more efficient, as their trajectories are less impacted by currents and turbulence
(Liu et al., 2018; Wekerle et al., 2018; Ma et al., 2021; Wang et al., 2022). However, particles with lower sinking velocities
are more sensitive to the flow and can easily be dispersed over a large area far away from the ST, which would decrease the
prediction score, as suggested in Figures 6b and d.

275 The use of a coupled biogeochemical model embedded in POLGYR would provide information on surface chlorophyll
distribution (i.e. sea colour) and primary production intensity (PP) (Kostadinov et al., 2009; Dunne et al., 2005). Although
the relationships are not direct (Laurenceau-Cornec et al., 2020; Iversen and Lampitt, 2020; Cael et al., 2021), high PP levels
are associated with large phytoplankton cells and particles, which may be associated with higher sink rates. It is then possible
to weigh the distribution of particles in terms of size and sinking velocity against the PP estimated by the model where they
280 are exported, which should make the simulations more realistic. In addition, sea colour observations, together with altimetry
data, can be used as input to a machine learning system to better constrain carbon fluxes at depth, using an approach similar
to that presented here. However, particle size and sinking velocity are affected by numerous biological processes during their
journey, which are generally not taken into account in simple Lagrangian studies. Although a Lagrangian approach can be
developed (Jokulsdottir and Archer, 2016), an ad hoc parameterisation, for example derived from BGC models simulating
285 particle dynamics (Aumont et al., 2015), could also be used and tested.

6 Conclusions

Identifying the origin of particles captured by sediment traps is important for interpreting measured fluxes and improving
sampling methods. This task is challenging and often leads to inaccurate assumptions or requires complex 3D data assimilation
models. In our study, (i) we demonstrate the ability of machine learning to predict the origin of particles trapped in a PAP
290 sediment trap in real time, based on realistic 3D numerical simulation and Lagrangian tracking. (ii) We found that the catchment
area of particles is mainly driven by ocean surface conditions, suggesting that our machine learning model could be applied to
satellite data. (iii) Statistical analysis shows that the performance of the prediction is sensitive to local dynamics. The model
performs better at low KE and in the presence of coherent vortices above the sediment trap. The next challenge is to apply
our model to real data and develop a confidence index based on the local conditions. The particle modeling also needs to be
295 improved to account for the wide range of particle sinking velocities.



Code availability. The codes used in this study are available online at <https://github.com/TheoPerd/SPARO>.

Data availability. The datasets used in this study are available online at <https://doi.org/10.17882/97556>.

Author contributions. TP, JG, RF and LM : writing, analyse and methodology. JC : writing and technical support for the simulations.

Competing interests. The authors declare no competing interests.

300 *Acknowledgements.* T.P. received a Ph.D. grant from École Normale Supérieure Paris-Saclay. This work was also supported by the ISblue
project, an Interdisciplinary graduate school for the blue planet (ANR-17-EURE-0015), and co-funded by a grant from the French government
under the program "Investissements d'Avenir". This manuscript contributes to the APERO project funded by the National Research Agency
under the grant APERO [grant number ANR ANR-21-CE01-0027] and by the French LEFE-Cyber program. Simulations were performed
using HPC resources from GENCI-TGCC (grant 2018-A0050107638) and from DATARMOR of "Pôle de Calcul Intensif pour la Mer" at
305 Ifremer, Brest, France. J.G. would like to acknowledge support from the French National Agency for Research (ANR) through the project
DEEPER (ANR-19-CE01-0002-01) and AI chair OceaniX (ANR-19-CHIA-0016). Simulations were performed using HPC resources from
GENCI-TGCC (Grants 2022-A0090112051), and from HPC facilities DATARMOR of "Pôle de Calcul Intensif pour la Mer" at Ifremer Brest
France. The authors thank Mathieu Le Corre for providing CROCO simulation outputs.



References

- 310 Allredge, A. L. and Gotschalk, C.: In situ settling behavior of marine snow, *Limnology and Oceanography*, 33, <https://doi.org/10.4319/lo.1988.33.3.0339>, 1988.
- Alonso-González, I. J., Arístegui, J., Lee, C., and Calafat, A.: Regional and temporal variability of sinking organic matter in the subtropical northeast Atlantic Ocean: A biomarker diagnosis, *Biogeosciences*, 7, <https://doi.org/10.5194/bg-7-2101-2010>, 2010.
- Armstrong, R. A., Lee, C., Hedges, J. I., Honjo, S., and Wakeham, S. G.: A new, mechanistic model for organic carbon fluxes in the ocean
315 based on the quantitative association of POC with ballast minerals, *Deep-Sea Research Part II: Topical Studies in Oceanography*, 49, [https://doi.org/10.1016/S0967-0645\(01\)00101-1](https://doi.org/10.1016/S0967-0645(01)00101-1), 2001.
- Asper, V. L., Deuser, W. G., Knauer, G. A., and Lohrenz, S. E.: Rapid coupling of sinking particle fluxes between surface and deep ocean waters, *Nature*, 357, <https://doi.org/10.1038/357670a0>, 1992.
- Aumont, O., Ethé, C., Tagliabue, A., Bopp, L., and Gehlen, M.: PISCES-v2: An ocean biogeochemical model for carbon and ecosystem
320 studies, *Geoscientific Model Development*, 8, 2465–2513, <https://doi.org/10.5194/gmd-8-2465-2015>, 2015.
- Barth, A., Alvera-Azcárate, A., Licer, M., and Beckers, J.-M.: DINCAE 1.0: a convolutional neural network with error estimates to reconstruct sea surface temperature satellite observations, *Geoscientific Model Development*, 13, 1609–1622, <https://doi.org/10.5194/gmd-13-1609-2020>, 2020.
- Beauchamp, M., Febvre, Q., Geogrentum, H., and Fablet, R.: 4DVarNet-SSH : end-to-end learning of variational interpolation schemes for
325 nadir and wide-swath satellite altimetry, 2022.
- Bhattacharyya, A.: On a measure of divergence between two statistical populations defined by their probability distribution, *Bulletin of the Calcutta Mathematical Society*, 35, 99–110, 1943.
- Billett, D. S., Lampitt, R. S., Rice, A. L., and Mantoura, R. F.: Seasonal sedimentation of phytoplankton to the deep-sea benthos, *Nature*, 302, <https://doi.org/10.1038/302520a0>, 1983.
- 330 Bolton, T. and Zanna, L.: Applications of Deep Learning to Ocean Data Inference and Subgrid Parameterization, *Journal of Advances in Modeling Earth Systems*, 11, <https://doi.org/10.1029/2018MS001472>, 2019.
- Breiman, L.: Bagging predictors, *Machine Learning*, 24, <https://doi.org/10.1007/bf00058655>, 1996.
- Buckingham, C. E., Naveira Garabato, A. C., Thompson, A. F., Brannigan, L., Lazar, A., Marshall, D. P., George Nurser, A. J., Damerell, G., Heywood, K. J., and Belcher, S. E.: Seasonality of submesoscale flows in the ocean surface boundary layer, *Geophysical Research
335 Letters*, 43, 2118–2126, <https://doi.org/10.1002/2016GL068009>, 2016.
- Burd, A., Buchan, A., Church, M. J., Landry, M. R., McDonnell, A. M. P., Passow, U., Steinberg, D. K., and Benway, H. M.: Towards a transformative understanding of the oceans biological pump: Priorities for future research - Report on the NSF Biology of the Biological Pump Workshop, <https://doi.org/10.1575/1912/8263>, 2016.
- Burd, A. B., Hansell, D. A., Steinberg, D. K., Anderson, T. R., Arístegui, J., Baltar, F., Beupré, S. R., Buesseler, K. O., DeHairs, F., Jackson, G. A., Kadko, D. C., Koppelman, R., Lampitt, R. S., Nagata, T., Reinthaler, T., Robinson, C., Robison, B. H., Tamburini, C., and Tanaka, T.: Assessing the apparent imbalance between geochemical and biochemical indicators of meso- and bathypelagic biological activity: What the @\$\$ is wrong with present calculations of carbon budgets?, *Deep Sea Research Part II: Topical Studies in Oceanography*, 57, 1557–1571, <https://doi.org/https://doi.org/10.1016/j.dsr2.2010.02.022>, 2010.
- 345 Cael, B. B., Cavan, E. L., and Britten, G. L.: Reconciling the Size-Dependence of Marine Particle Sinking Speed, *Geophysical Research Letters*, 48, e2020GL091771, <https://doi.org/10.1029/2020GL091771>, 2021.



- Chapman, C. and Charantonis, A. A.: Reconstruction of Subsurface Velocities From Satellite Observations Using Iterative Self-Organizing Maps, *IEEE Geoscience and Remote Sensing Letters*, 14, <https://doi.org/10.1109/LGRS.2017.2665603>, 2017.
- Chelton, D. B., Deszoeke, R. A., Schlax, M. G., El Naggar, K., and Siwertz, N.: Geographical variability of the first baroclinic Rossby radius of deformation, *Journal of Physical Oceanography*, 28, 433–460, [https://doi.org/10.1175/1520-0485\(1998\)028<0433:GVOTFB>2.0.CO;2](https://doi.org/10.1175/1520-0485(1998)028<0433:GVOTFB>2.0.CO;2),
350 1998.
- Cutolo, E., Pascual, A., Ruiz, S., Zarokanellos, N., and Fablet, R.: CLOINet: Ocean state reconstructions through remote-sensing, in-situ sparse observations and Deep Learning, <http://arxiv.org/abs/2210.10767>, 2022.
- Deuser, W. G. and Ross, E. H.: Seasonal change in the flux of organic carbon to the deep Sargasso Sea [5], <https://doi.org/10.1038/283364a0>,
1980.
- 355 Deuser, W. G., Muller-Karger, F. E., and Hemleben, C.: Temporal variations of particle fluxes in the deep subtropical and tropical North Atlantic: Eulerian versus Lagrangian effects, *Journal of Geophysical Research*, 93, <https://doi.org/10.1029/JC093iC06p06857>, 1988.
- Deuser, W. G., Muller-Karger, F. E., Evans, R. H., Brown, O. B., Esaias, W. E., and Feldman, G. C.: Surface-ocean color and deep-ocean carbon flux: how close a connection?, *Deep Sea Research Part A, Oceanographic Research Papers*, 37, [https://doi.org/10.1016/0198-0149\(90\)90046-X](https://doi.org/10.1016/0198-0149(90)90046-X), 1990.
- 360 Dever, M., Nicholson, D., Omand, M. M., and Mahadevan, A.: Size-Differentiated Export Flux in Different Dynamical Regimes in the Ocean, *Global Biogeochemical Cycles*, 35, e2020GB006764, <https://doi.org/10.1029/2020GB006764>, 2021.
- Dunne, J. P., Armstrong, R. A., Gnanadesikan, A., and Sarmiento, J. L.: Empirical and mechanistic models for the particle export ratio, *Global Biogeochemical Cycles*, 19, <https://doi.org/10.1029/2004GB002390>, 2005.
- Frigstad, H., Henson, S. A., Hartman, S. E., Omar, A. M., Jeansson, E., Cole, H., Pebody, C., and Lampitt, R. S.: Links between sur-
365 face productivity and deep ocean particle flux at the Porcupine Abyssal Plain sustained observatory, *Biogeosciences*, 12, 5885–5897, <https://doi.org/10.5194/bg-12-5885-2015>, 2015.
- George, T. M., Manucharyan, G. E., and Thompson, A. F.: Deep learning to infer eddy heat fluxes from sea surface height patterns of mesoscale turbulence, *Nature Communications*, 12, <https://doi.org/10.1038/s41467-020-20779-9>, 2021.
- Gula, J. and Collin, J.: Pyticles: a Python/Fortran hybrid parallelized code for 3D Lagrangian particles advection using ROMS/CROCO
370 model data, <https://doi.org/10.5281/zenodo.4973786>, 2021.
- Hartman, S. E., Bett, B. J., Durden, J. M., Henson, S. A., Iversen, M., Jeffreys, R. M., Horton, T., Lampitt, R., and Gates, A. R.: Enduring science: Three decades of observing the Northeast Atlantic from the Porcupine Abyssal Plain Sustained Observatory (PAP-SO), *Progress in Oceanography*, 191, 102508, <https://doi.org/10.1016/j.pocean.2020.102508>, 2021.
- Haynes, K., Lagerquist, R., McGraw, M., Musgrave, K., and Ebert-Uphoff, I.: Creating and Evaluating Uncertainty Estimates with Neural
375 Networks for Environmental-Science Applications, *Artificial Intelligence for the Earth Systems*, 2, 1–29, <https://doi.org/10.1175/aies-d-22-0061.1>, 2023.
- Henson, S. A., Laufkötter, C., Leung, S., Giering, S. L., Palevsky, H. I., and Cavan, E. L.: Uncertain response of ocean biological carbon export in a changing world, *Nature Geoscience*, 15, 248–254, <https://doi.org/10.1038/s41561-022-00927-0>, 2022.
- Iversen, M. H. and Lampitt, R. S.: Size does not matter after all: No evidence for a size-sinking relationship for marine snow, *Progress in
380 Oceanography*, 189, 102445, <https://doi.org/10.1016/j.pocean.2020.102445>, 2020.
- Jenkins, J., Paiement, A., Ourmières, Y., Sommer, J. L., Verron, J., Ubelmann, C., and Glotin, H.: A DNN Framework for Learning Lagrangian Drift With Uncertainty, <http://arxiv.org/abs/2204.05891>, 2022.



- Jokulsdottir, T. and Archer, D.: A stochastic, Lagrangian model of sinking biogenic aggregates in the ocean (SLAMS 1.0): Model formulation, validation and sensitivity, *Geoscientific Model Development*, 9, 1455–1476, <https://doi.org/10.5194/gmd-9-1455-2016>, 2016.
- 385 Kingma, D. P. and Ba, J. L.: Adam: A method for stochastic optimization, in: 3rd International Conference on Learning Representations, ICLR 2015 - Conference Track Proceedings, 2015.
- Kostadinov, T. S., Siegel, D. A., and Maritorena, S.: Retrieval of the particle size distribution from satellite ocean color observations, *Journal of Geophysical Research: Oceans*, 114, <https://doi.org/10.1029/2009JC005303>, 2009.
- Lampitt, R. S., Achterberg, E. P., Anderson, T. R., Hughes, J. A., Iglesias-Rodriguez, M. D., Kelly-Gerreyn, B. A., Lucas, M., Popova, E. E.,
390 Sanders, R., Shepherd, J. G., Smythe-Wright, D., and Yool, A.: Ocean fertilization: A potential means of geoengineering?, *Philosophical Transactions of the Royal Society A: Mathematical, Physical and Engineering Sciences*, 366, <https://doi.org/10.1098/rsta.2008.0139>, 2008.
- Lampitt, R. S., Briggs, N., Cael, B. B., Espinola, B., Hélaouët, P., Henson, S. A., Norrbin, F., Pebody, C. A., and Smeed, D.: Deep ocean particle flux in the Northeast Atlantic over the past 30 years: carbon sequestration is controlled by ecosystem structure in the upper ocean, *Frontiers in Earth Science*, 11, 1176 196, <https://doi.org/10.3389/feart.2023.1176196>, 2023.
- 395 Laurenceau-Cornec, E. C., Le Moigne, F. A. C., Gallinari, M., Moriceau, B., Toullec, J., Iversen, M. H., Engel, A., and De La Rocha, C. L.: New guidelines for the application of Stokes' models to the sinking velocity of marine aggregates, *Limnology and Oceanography*, 65, 1264–1285, <https://doi.org/10.1002/lno.11388>, 2020.
- Le Cann, B.: Observed mean and mesoscale upper ocean circulation in the midlatitude northeast Atlantic, *Journal of Geophysical Research*, 110, C07S05, <https://doi.org/10.1029/2004JC002768>, 2005.
- 400 Le Corre, M., Gula, J., and Tréguier, A. M.: Barotropic vorticity balance of the North Atlantic subpolar gyre in an eddy-resolving model, *Ocean Science*, 16, 451–468, <https://doi.org/10.5194/os-16-451-2020>, 2020.
- Le Moigne, F. A., Henson, S. A., Sanders, R. J., and Madsen, E.: Global database of surface ocean particulate organic carbon export fluxes diagnosed from the 234Th technique, *Earth System Science Data*, 5, 295–304, <https://doi.org/10.5194/essd-5-295-2013>, 2013.
- Le Moigne, F. A. C.: Pathways of Organic Carbon Downward Transport by the Oceanic Biological Carbon Pump, *Frontiers in Marine
405 Science*, 6, 482 488, <https://doi.org/10.3389/fmars.2019.00634>, 2019.
- Lecun, Y., Bengio, Y., and Hinton, G.: Deep learning, *Nature*, 521, 436–444, <https://doi.org/10.1038/nature14539>, 2015.
- Liu, G., Bracco, A., and Passow, U.: The influence of mesoscale and submesoscale circulation on sinking particles in the northern Gulf of Mexico, *Elementa*, 6, <https://doi.org/10.1525/elementa.292>, 2018.
- Ma, W., Xiu, P., Chai, F., Ran, L., Wiesner, M. G., Xi, J., Yan, Y., and Fredj, E.: Impact of mesoscale eddies on the source funnel of sediment
410 trap measurements in the South China Sea, *Progress in Oceanography*, 194, 102 566, <https://doi.org/10.1016/j.pocean.2021.102566>, 2021.
- Manucharyan, G. E., Siegelman, L., and Klein, P.: A Deep Learning Approach to Spatiotemporal Sea Surface Height Interpolation and Estimation of Deep Currents in Geostrophic Ocean Turbulence, *Journal of Advances in Modeling Earth Systems*, 13, 1–17, <https://doi.org/10.1029/2019MS001965>, 2021.
- Passow, U. and Carlson, C. A.: The biological pump in a high CO₂ world, *Marine Ecology Progress Series*, 470,
415 <https://doi.org/10.3354/meps09985>, 2012.
- Paszke, A., Gross, S., Massa, F., Lerer, A., Bradbury, J., Chanan, G., Killeen, T., Lin, Z., Gimelshein, N., Antiga, L., Desmaison, A., Kopf, A., Yang, E., DeVito, Z., Raison, M., Tejani, A., Chilamkurthy, S., Steiner, B., Fang, L., Bai, J., and Chintala, S.: PyTorch: An Imperative Style, High-Performance Deep Learning Library, in: *Advances in Neural Information Processing Systems* 32, pp. 8024–8035, Curran Associates, Inc., <http://papers.nips.cc/paper/9015-pytorch-an-imperative-style-high-performance-deep-learning-library.pdf>, 2019.



- 420 Pauthenet, E., Bachelot, L., Balem, K., Maze, G., Tréguier, A. M., Roquet, F., Fablet, R., and Tandeo, P.: Four-dimensional temperature, salinity and mixed-layer depth in the Gulf Stream, reconstructed from remote-sensing and in situ observations with neural networks, *Ocean Science*, 18, 1221–1244, <https://doi.org/10.5194/os-18-1221-2022>, 2022.
- Rembauville, M., Blain, S., Manno, C., Tarling, G., Thompson, A., Wolff, G., and Salter, I.: The role of diatom resting spores in pelagic-benthic coupling in the Southern Ocean, *Biogeosciences*, 15, <https://doi.org/10.5194/bg-15-3071-2018>, 2018.
- 425 Ronneberger, O., Fischer, P., and Brox, T.: U-Net: Convolutional Networks for Biomedical Image Segmentation, <http://arxiv.org/abs/1505.04597>, 2015.
- Shchepetkin, A. F. and McWilliams, J. C.: The regional oceanic modeling system (ROMS): A split-explicit, free-surface, topography-following-coordinate oceanic model, *Ocean Modelling*, 9, <https://doi.org/10.1016/j.ocemod.2004.08.002>, 2005.
- Siegel, D. A., Granata, T. C., Michaels, A. F., and Dickey, T. D.: Mesoscale eddy diffusion, particle sinking, and the interpretation of sediment trap data, *Journal of Geophysical Research*, 95, <https://doi.org/10.1029/JC095iC04p05305>, 1990.
- 430 Siegel, D. A., Fields, E., and Buesseler, K. O.: A bottom-up view of the biological pump: Modeling source funnels above ocean sediment traps, *Deep-Sea Research Part I: Oceanographic Research Papers*, 55, <https://doi.org/10.1016/j.dsr.2007.10.006>, 2008.
- Siegel, D. A., Buesseler, K. O., Doney, S. C., Sailley, S. F., Behrenfeld, M. J., and Boyd, P. W.: Global assessment of ocean carbon export by combining satellite observations and food-web models, *Global Biogeochemical Cycles*, 28, 181–196, <https://doi.org/https://doi.org/10.1002/2013GB004743>, 2014.
- 435 Turner, J. T.: Zooplankton fecal pellets, marine snow, phytodetritus and the ocean’s biological pump, <https://doi.org/10.1016/j.pocean.2014.08.005>, 2015.
- Villa-Alfageme, M., de Soto, F. C., Ceballos, E., Giering, S. L. C., Le Moigne, F. A. C., Henson, S., Mas, J. L., and Sanders, R. J.: Geographical, seasonal, and depth variation in sinking particle speeds in the North Atlantic, *Geophysical Research Letters*, 43, 8609–8616, <https://doi.org/10.1002/2016GL069233>, 2016.
- 440 Wang, L., Gula, J., Collin, J., and Mémerly, L.: Effects of Mesoscale Dynamics on the Path of Fast-Sinking Particles to the Deep Ocean: A Modeling Study, *Journal of Geophysical Research: Oceans*, 127, 1–30, <https://doi.org/10.1029/2022JC018799>, 2022.
- Wekerle, C., Krumpen, T., Dinter, T., von Appen, W. J., Iversen, M. H., and Salter, I.: Properties of sediment trap catchment areas in fram strait: Results from Lagrangian modeling and remote sensing, *Frontiers in Marine Science*, 9, <https://doi.org/10.3389/fmars.2018.00407>, 2018.
- 445 Williams, R. G. and Follows, M. J.: *Ocean Dynamics and the Carbon Cycle: Principles and Mechanisms*, Cambridge University Press, <https://doi.org/10.1017/CBO9780511977817>, 2011.