



HAL
open science

3DA: Data-Driven Data Assimilation Applications to the Lorenz system and simulated sea surface heights

Yicun Zhen, Pierre Tandeo, Stéphanie Leroux, Julien Le Sommer, Sammy Metref, Pierre Ailliot, Ronan Fablet, Bertrand Chapron, Cédric Herzet, Thierry Penduff, et al.

► **To cite this version:**

Yicun Zhen, Pierre Tandeo, Stéphanie Leroux, Julien Le Sommer, Sammy Metref, et al.. 3DA: Data-Driven Data Assimilation Applications to the Lorenz system and simulated sea surface heights. EGU 2019: European Geosciences Union, Apr 2019, Vienna, Austria. pp.1. hal-02108347

HAL Id: hal-02108347

<https://imt-atlantique.hal.science/hal-02108347v1>

Submitted on 24 Apr 2019

HAL is a multi-disciplinary open access archive for the deposit and dissemination of scientific research documents, whether they are published or not. The documents may come from teaching and research institutions in France or abroad, or from public or private research centers.

L'archive ouverte pluridisciplinaire **HAL**, est destinée au dépôt et à la diffusion de documents scientifiques de niveau recherche, publiés ou non, émanant des établissements d'enseignement et de recherche français ou étrangers, des laboratoires publics ou privés.



IMT Atlantique
Bretagne-Pays de la Loire
École Mines-Télécom

3DA: Data-Driven Data Assimilation

Applications to the Lorenz system and simulated sea surface heights

Authors

Yicun Zhen
Pierre Tandeo
Stéphanie Leroux
Julien Le Sommer
Pierre Ailliot
Ronan Fablet
Bertrand Chapron
Cedric Herzet
Thierry Penduff
Jacques Verron

Sponsored by



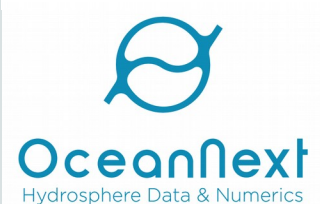
Affiliations



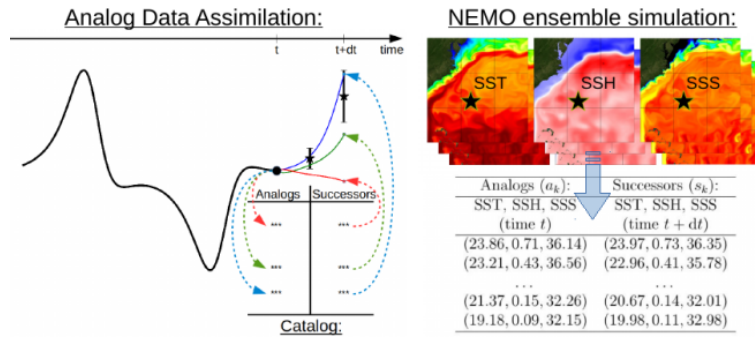
IMT Atlantique
Bretagne-Pays de la Loire
École Mines-Télécom



Institut
des géosciences
de l'environnement

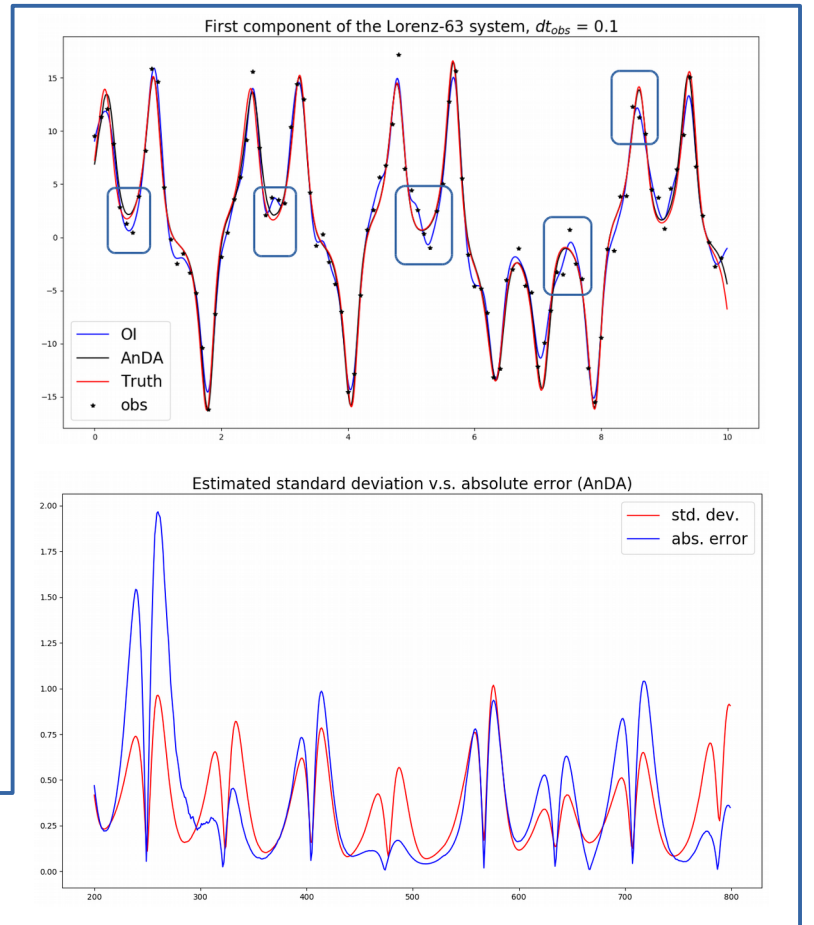


Method[1]: Analog Forecast + EnKS



- ▶ Given a huge historical dataset \mathcal{C} (the catalog);
- ▶ Given the current state estimate x_t , search for the analogs of x_t within \mathcal{C} ;
- ▶ Build a local model based on the analogs and the corresponding successors;
- ▶ Apply the local model on x_t to do the forecast.

Comparison of Analog Data Assimilation (AnDA) with optimal interpolation (OI) on Lorenz 63 model: only the first component is involved.

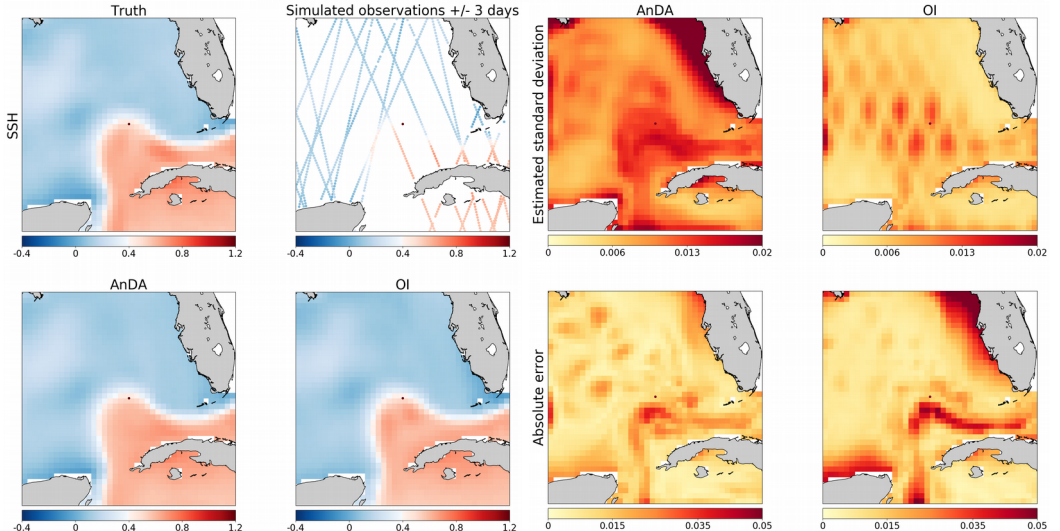
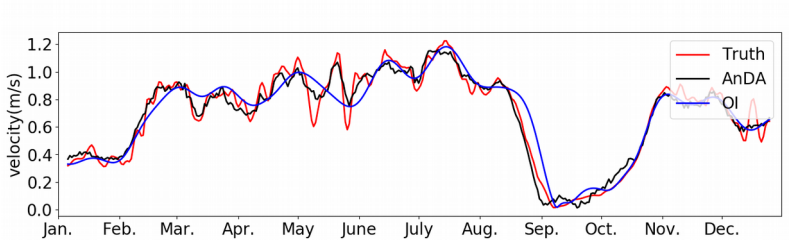
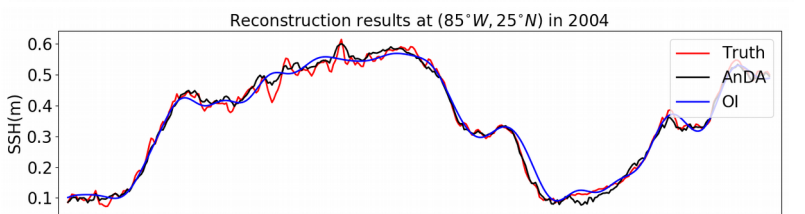
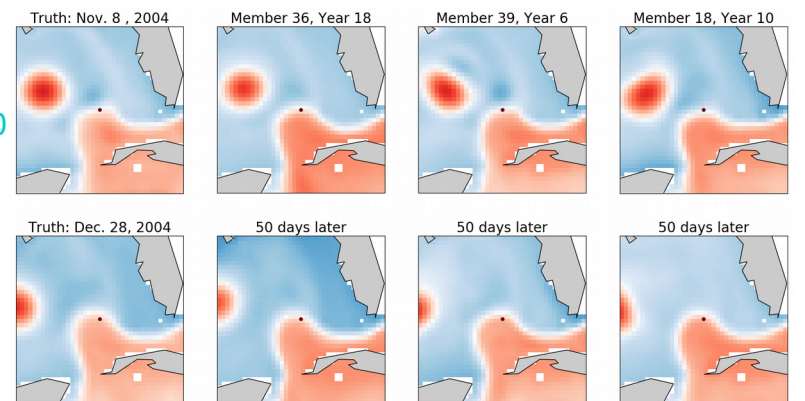
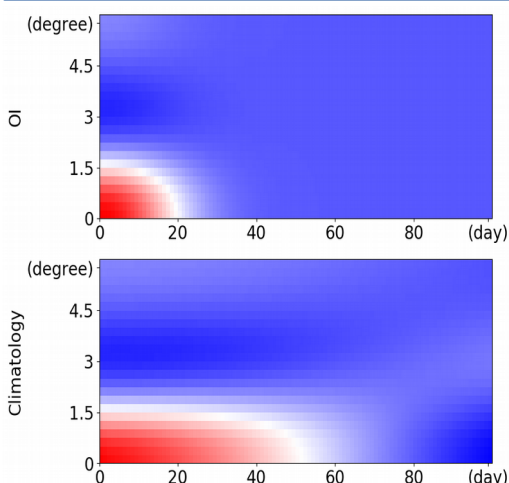


OSSE of simulated sea surface height (SSH) in the Gulf of Mexico

- ▶ Dataset: the OCCIPUT[2] simulated SSH, 50 members, 20 years
- ▶ Truth: member #1 in year 20
- ▶ Observations: simulated along-tracks from the real altimetry in 2004
- ▶ (AnDA) catalog: member #2-#50, in year 1 - year 19
- ▶ (AnDA) ensemble size: 1000
- ▶ (OI) $B = B_{clim,x} \otimes \exp(dt^2/L_t^2)$ where $B_{clim,x}$ is the spatial climatology calculated from the OCCIPUT dataset
- ▶ (OI) $L_t = 20$ (days)
- ▶ (OI) radius of influence = 1.5 (degrees)

Summary:

- ▶ AnDA captures more small scale flows
- ▶ AnDA produces more informative variance maps
- ▶ AnDA relies on catalog



References:

- [1] R. Iguensat et al., The analog data assimilation, MWR, 2017
- [2] L. Bessières et al., Development of a probabilistic ocean modelling system based on NEMO 3.5: application at eddying resolution, GRL, 2017

Contact : yicun.zhen@imt-atlantique.fr